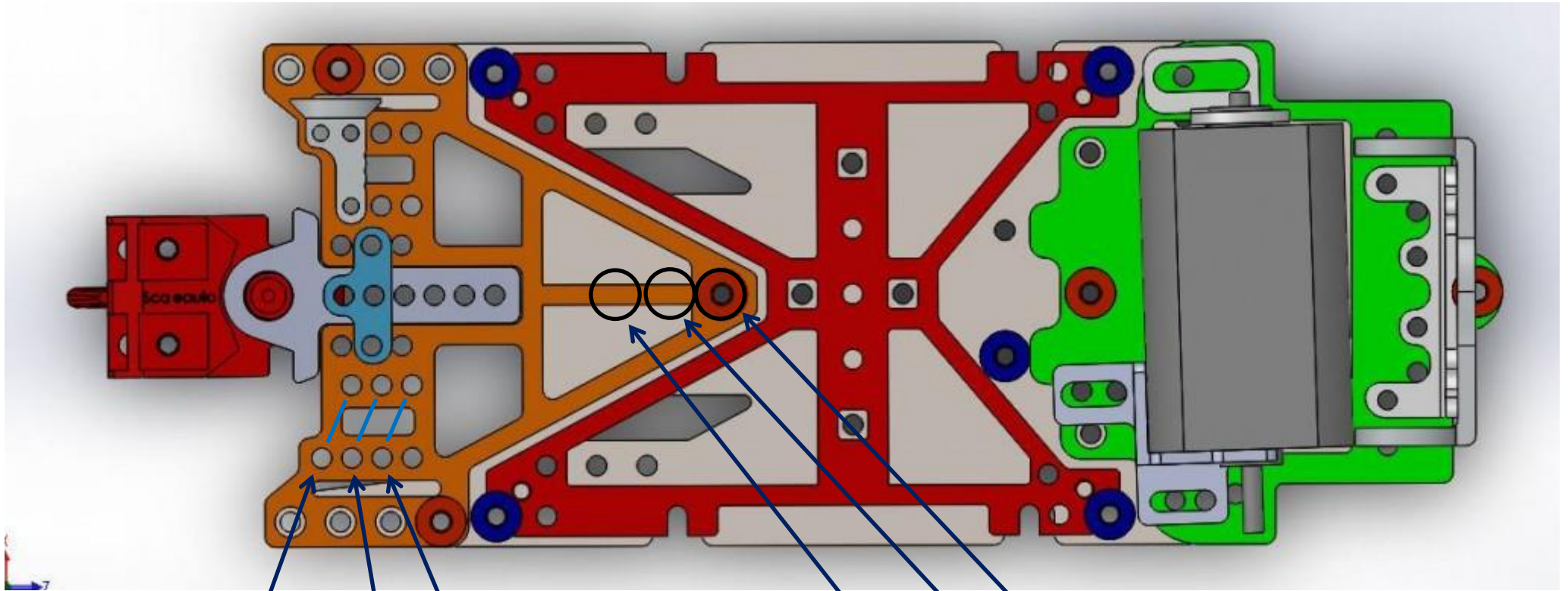


Fahrzeug	Achsabstand Angaben: Scaleauto/gemessen	Front Subframe Typ 1 SC8153C	Front Subframe Typ 2 (Offset -1mm) SC8154C	Position Axle / Position Subframe
Porsche 911 GT3 RSR / GT3 Cup	100mm	x		Short Axle / Short Subframe
Viper SRT	106mm / 105mm	x	x	Short Axle / Medium Subframe
BMW Z4	106mm	xx	x	Long Axle / Short Subframe
Audi R8 LMS GT3	110mm	x		Short Axle / Long Subframe
Porsche 991 GT3	104mm		x	Medium Axle / Short Subframe
Mercedes SLS AMG GT3	112mm		x	Long Axle / Medium Subframe
Jaguar XKR GT2	114mm / 115mm		x	Medium Axle / Long Subframe
BMW M3	114mm / 115mm / <u>116mm</u>	xx	x	Long Axle / Long Subframe

Front Subframe Typ 1, Carbon SC8153C			
	Short Subframe Position	Medium Subframe Position	Long Subframe Position
Short Axle Position	100mm	105mm	110mm
Medium Axle Position	103mm	108mm	113mm
Long Axle Position	106mm	111mm	116mm

Front Subframe Typ 2 (Offset -1mm) Carbon SC8154C			
	Short Subframe Position	Medium Subframe Position	Long Subframe Position
Short Axle Position	101mm	106mm	111mm
Medium Axle Position	104mm	109mm	114mm
Long Axle Position	107mm	112mm	117mm



Long Axle Position

Medium Axle Position

Short Axle Position

Long Subframe Position

Medium Subframe Position

Short Subframe Position